

CERON TYPE 256

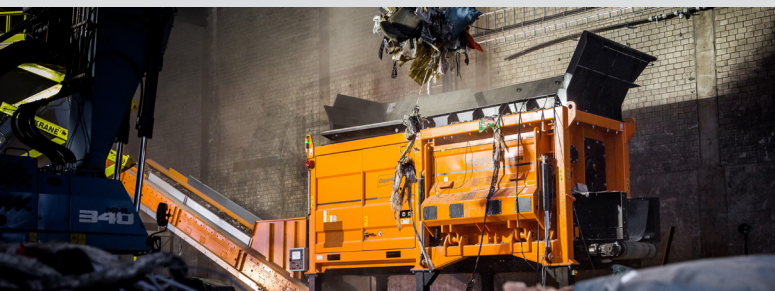
TECHNICAL DATA



Weight	30.600 kg
Length (Basic machine)	6.890 mm
Width (Basic machine)	2.780 mm
Height (Basic machine)	3.190 mm
Motor type	Three-phase motor with frequency converter
Rated power	132 / 200 / 315 / 400 kW
Infeed width (minimal)	2.760 mm
Infeed height (minimal)	2.890 mm
Shaft	
Length	2.500 mm
Diameter	600 / 800 mm
Rotational speed	15-31 rpm oder 14-28 rpm (Depending on equipment)
Number of shaft teeth	Depending on equipment

Freely selectable shredding system in sizes S, M, L and XL.
Conversion to other tooth sizes possible.

The technical data are approximate and depends on the machine equipment
(subject to change without notice).



Applications

The pre-shredders of the CERON series process waste wood, root wood, green waste, biowaste, household waste, bulky waste, commercial waste, mixed construction waste and much more. The pre-shredders are suitable for a wide range of tasks in the areas of mechanical-biological processing, biomass, refuse-derived fuel and landfill mining.



All advantages at a glance

- Powerful and impurity resistant
- Maximum throughput for difficult shredding tasks
- Highly efficient, speed adjustable drive
- Robust solid steel construction
- Coarse shredding (prevention of fines)
- User-friendly access and low maintenance
- Low operating costs
- Low dust and noise emission
- Automatic detection of contaminants and discharge
- Quick-change system for wear parts