

## AK 540 VE

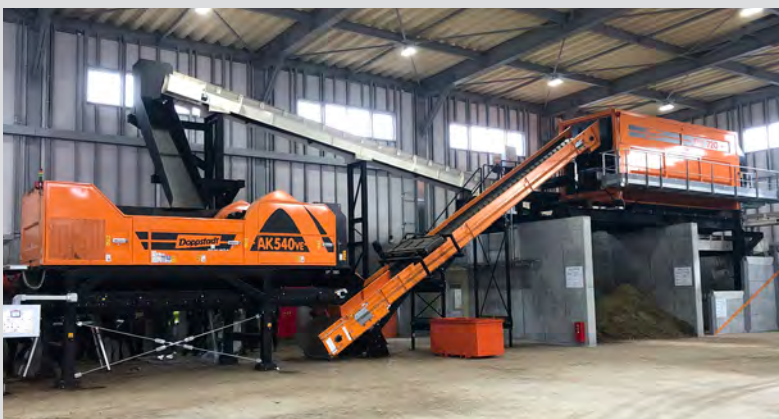
### TECHNICAL DATA



|                           |                                   |
|---------------------------|-----------------------------------|
| Weight                    | 22.700 kg                         |
| Length (basic machine)    | 7.880 mm                          |
| Width (basic machine)     | 2.630 mm                          |
| Height (basic machine)    | 3.052 mm (incl. 1090 mm subframe) |
| Motor type                | AC-motor frequency driven         |
| Rated power               | 315 kW / 428 PS                   |
| Torque                    | 2.021 Nm                          |
| Feeding width (minimal)   | 2.650 mm                          |
| Feeding height (minimal)  | 2.280 mm (incl. 1090 mm subframe) |
| Intake height (minimal)   | 538 mm                            |
| <b>Flail drum</b>         |                                   |
| Width                     | 1.770 mm                          |
| Diameter                  | 1.100 mm                          |
| Rotational speed          | 1.040 rpm                         |
| Fails total               | 36                                |
| <b>Discharge conveyor</b> |                                   |
| Length                    | 6.000 mm                          |
| Width                     | 1.600 mm                          |
| Belt speed                | 0,5 m/s                           |

Freely selectable flail equipment: carbide, bear claw, chisel.  
Conversion to other flail equipment possible.

The technical data are approximate and depends on the machine equipment  
(subject to change without notice).



### Applications

The fine shredders of the AK series can be used for shredding of biowaste and green waste in composting plants, of various wood qualities for waste wood processing, as well as for a wide variety of shredding tasks when processing biomass.



### All advantages at a glance

- Homogeneous output material
- Swinging flails - resistant against impurities
- Exposed impurities
- Adjustable throughput
- Quick change basket system - variable output grain size
- Fully automatic, load-dependent material feeding by a scraper floor and a feed-in drum
- Feeding with conveyor belt, wheel loader or grab